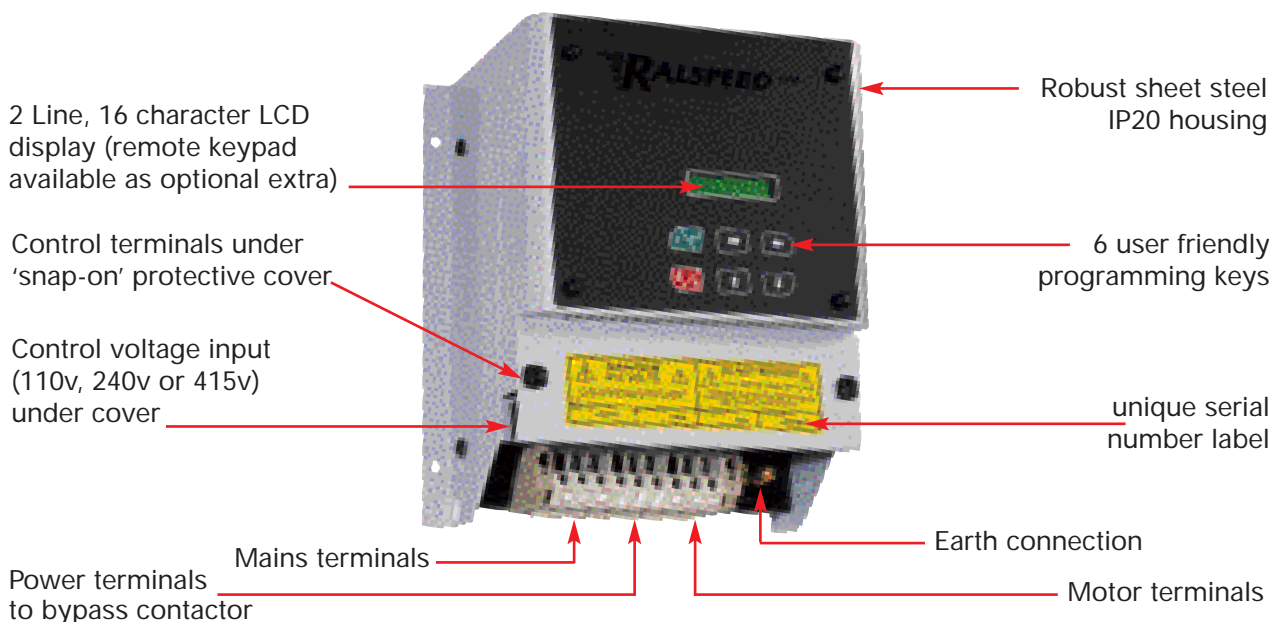


TQM2K-11/B to TQM2K-55/B

IP20 chassis version soft start unit for bypass duty, contactor to be supplied and fitted by the user



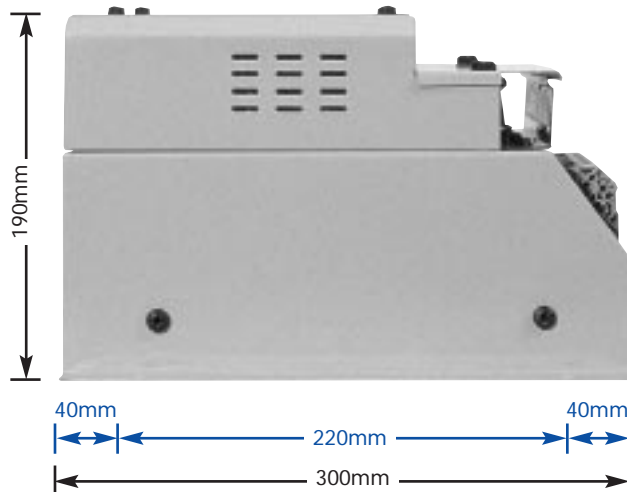
Technical Data

Ratings

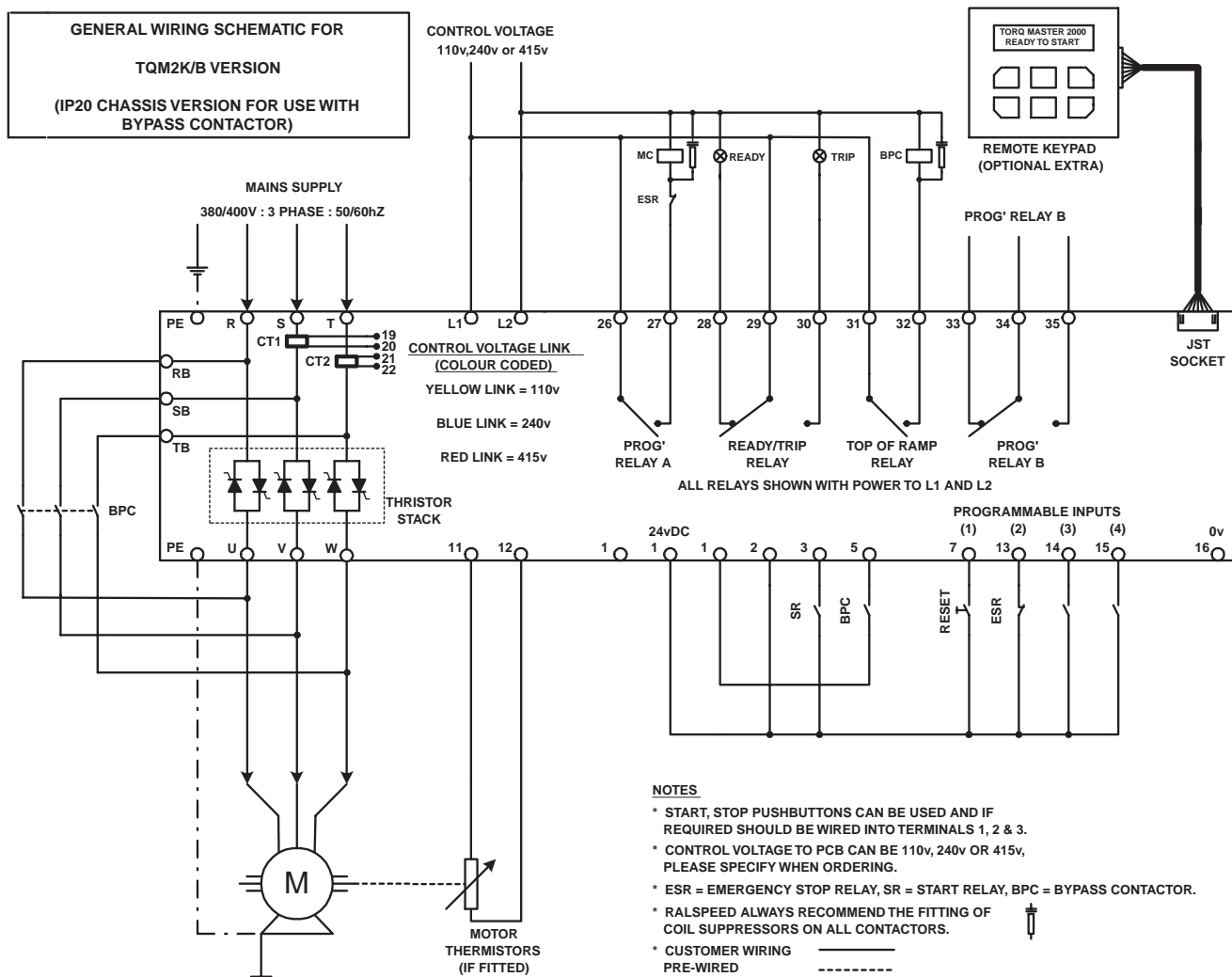
KW rating	11	15	22	30	37	45	55
Mains power (R, S, T)	110vAC to 415vAC +10%-10% (690v available as standard option)						
Current rating (Amps) at 380v	22	30	44	60	72	85	105
Control supply L1 & L2 (on PCB)	110v / 220v / 440v User selectable and fully fused						
Accel / Decel time – (Voltage ramp)	1 to 240 seconds independently adjustable						
Current limitation details	Max current limit 600% of full load current Ramp to limit 1-10 sec, Current time out 10-60 sec						
Starting torque	25% to 70% of mains voltage – 5% steps						
Stopping torque	25% to 100% of mains voltage – 5% steps						
Torque boost (kick start)	70% of mains voltage adjustable from 200ms to 2sec						
Max switching cycle	12 even starts per hour with override in engineers menu						
Dimensions H x W x D (in mm)	300 x 270 x 190						
Weights Kg (approximately & unpacked)	10	10	10	10	15	15	15
Recommended AC1 rating of bypass	28	38	55	75	90	100	120
Power Terminals - size (sq mm)	6	10	10	16	35	35	35
Ambient / Storage temperature	0°C 45°C / -22°C 75°C						
Programmable Relays	Overload, Underload, Thermistor, Service Over, Phase Fault, Firing Fault, External Trip, Overload Pre-alarm, Shearpin, Too many starts, Brake time over & Top of ramp						
Programmable Inputs	Inch, Reset Run Hours, External Trip, Brake Stop, Ramp Hold, Start Delay, Soft Stop, Local/Remote, Em Stop, Reset & Heatsink over Temperature						
Protection	Electronic Overload with 5 Selectable Curves, Underload, Thermistor Trip Circuit, Phase Fault, Thyristor Fault, Overload Pre-Alarm Too many starts, Emergency stop input & electronic "Shearpin"						
Information Screens	Motor Running - Time & Date, Ambient Temperature, Motor Amps (both digital & bar graph), 1000 Event Data-log (Downloadable), Service Interval & Run Hours						

Note: Due to continuous improvement & development, sizes & specification may change without notice - always check with factory before ordering.

TQM2K-11/B to TQM2K-55/B

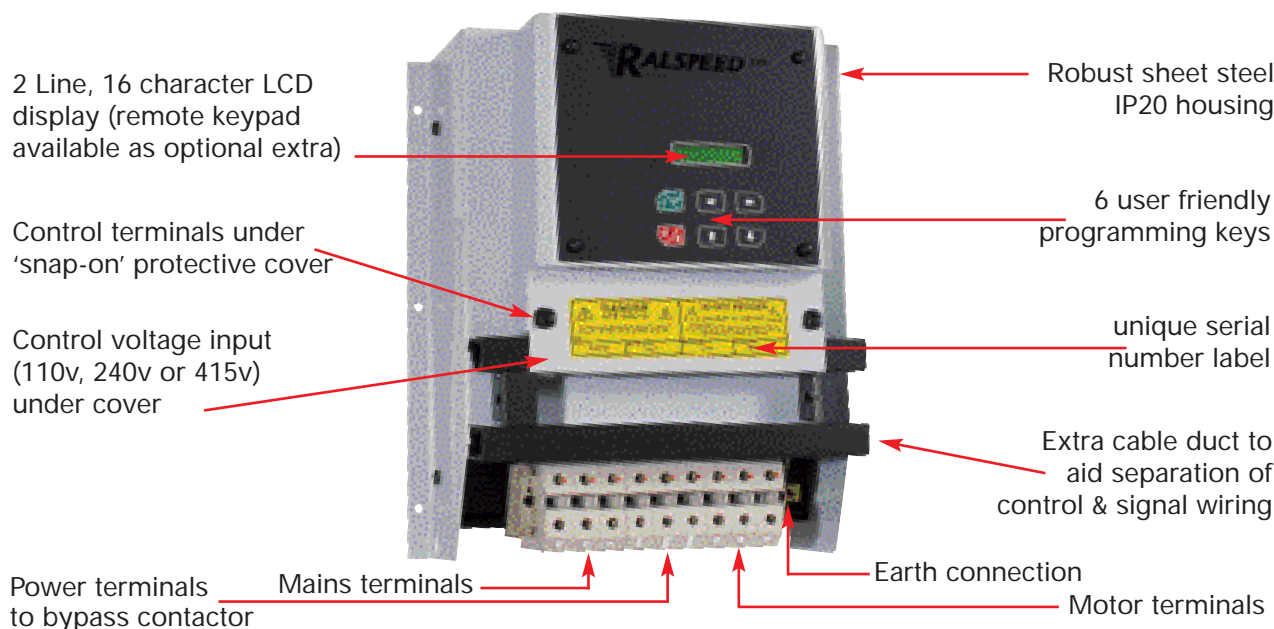


Dimensions for
fixing centres
(blue text)



TQM2K-75/B to TQM2K-90/B

IP20 chassis version soft start unit for bypass duty, contactor to be supplied and fitted by the user



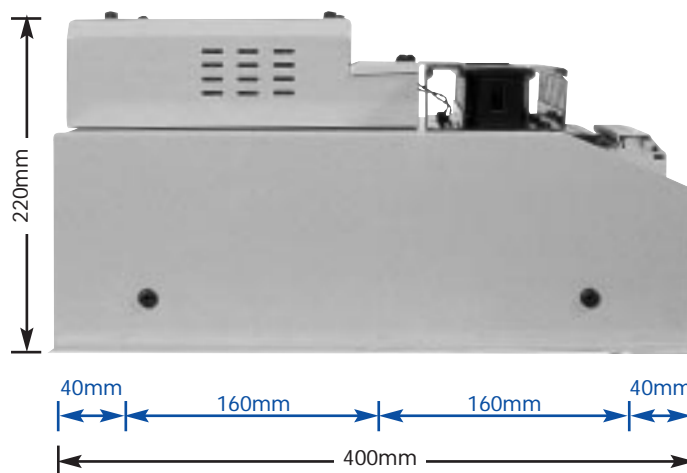
Technical Data

Ratings

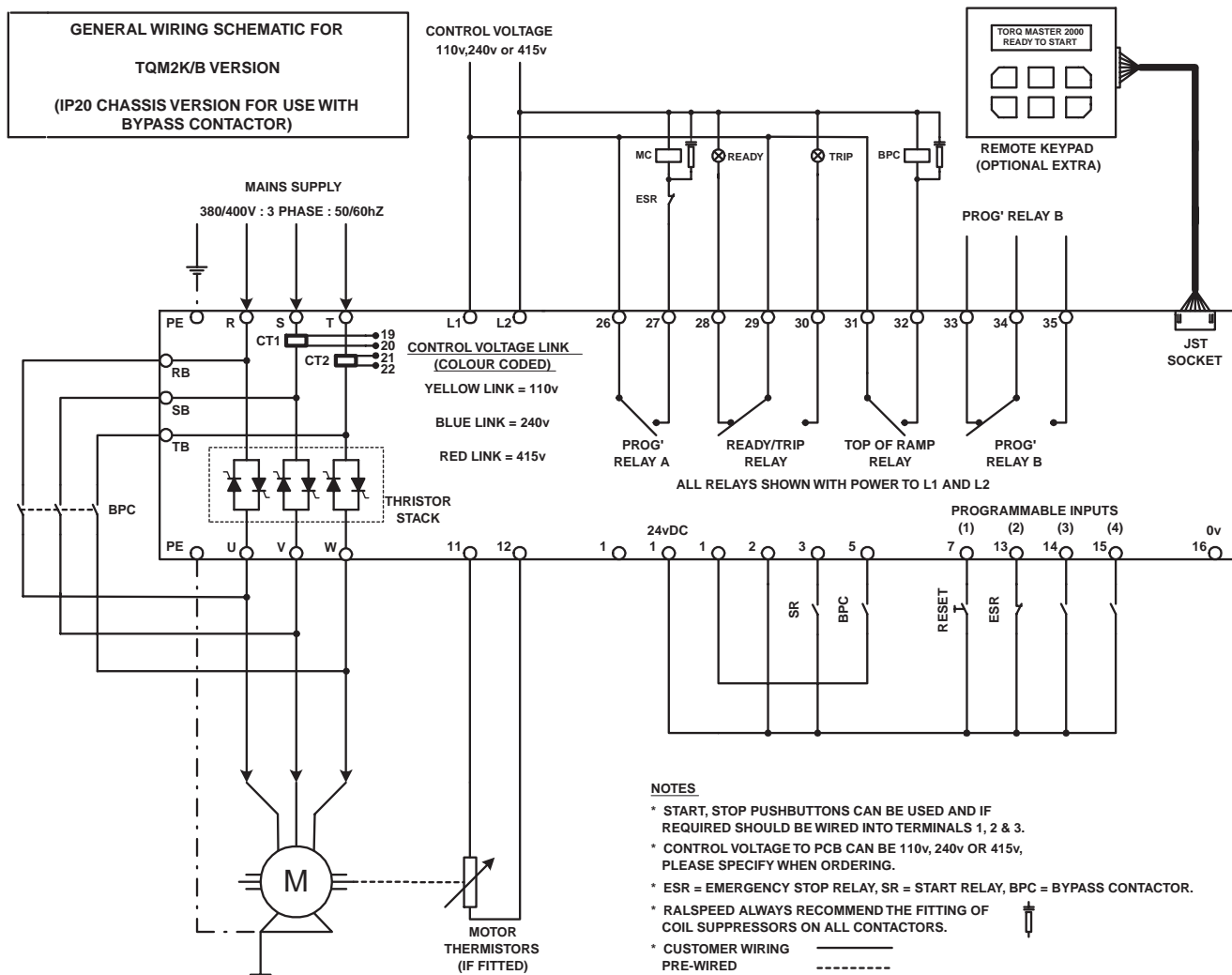
KW rating	75	90
Mains power (R, S, T)	110vAC to 415vAC +10%-10% (690v available as standard option)	
Current rating (Amps) at 380v	138	170
Control supply L1 & L2 (on PCB)	110v / 220v / 440v User selectable and fully fused	
Accel / Decel time - (Voltage ramp)	1 to 240 seconds independently adjustable	
Current limitation details	Max current limit 600% of full load current Ramp to limit 1-10 sec, Current time out 10-60 sec	
Starting torque	25% to 70% of mains voltage - 5% steps	
Stopping torque	25% to 100% of mains voltage - 5% steps	
Torque boost (kick start)	70% of mains voltage adjustable from 200ms to 2sec	
Max switching cycle	12 even starts per hour with override in engineers menu	
Dimensions H x W x D (in mm)	400 x 340 x 220	
Weights Kg (approximately & unpacked)	20	20
Recommended AC1 rating of bypass	150	250
Power Terminals - size (sq mm)	70	70
Ambient / Storage temperature	0°C 45°C / -22°C 75°C	
Programmable Relays	Overload, Underload, Thermistor, Service Over, Phase Fault, Firing Fault, External Trip, Overload Pre-alarm, Shearpin, Too many starts, Brake time over & Top of ramp	
Programmable Inputs	Inch, Reset Run Hours, External Trip, Brake Stop, Ramp Hold, Start Delay, Soft Stop, Local/Remote, Em Stop, Reset & Heatsink over Temperature	
Protection	Electronic Overload with 5 Selectable Curves, Underload, Thermistor Trip Circuit, Phase Fault, Thyristor Fault, Overload Pre-Alarm Too many starts, Emergency stop input & electronic "Shearpin"	
Information Screens	Motor Running - Time & Date, Ambient Temperature, Motor Amps (both digital & bar graph), 1000 Event Data-log (Downloading), Service Interval & Run Hours	

Note: Due to continuous improvement & development, sizes & specification may change without notice - always check with factory before ordering.

TQM2K-75/B to TQM2K-90/B

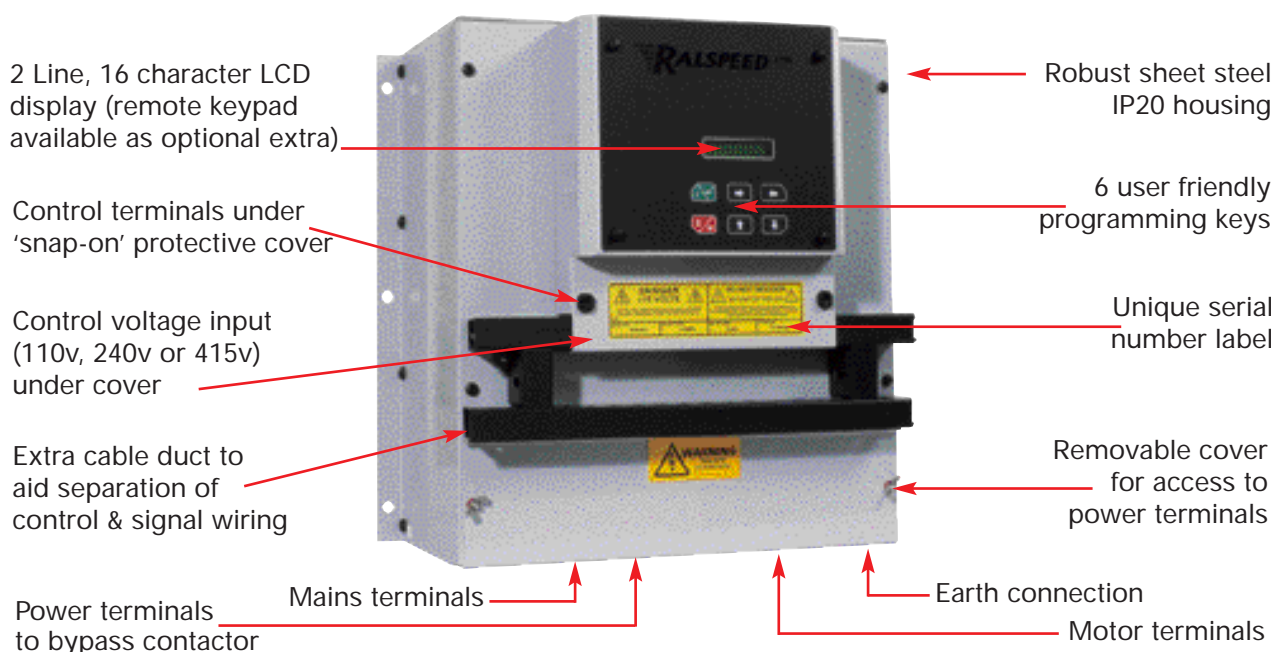


Dimensions for
fixing centres
(blue text)



TQM2K-110/B to TQM2K-250/B

IP20 chassis version soft start unit for bypass duty, contactor to be supplied and fitted by the user



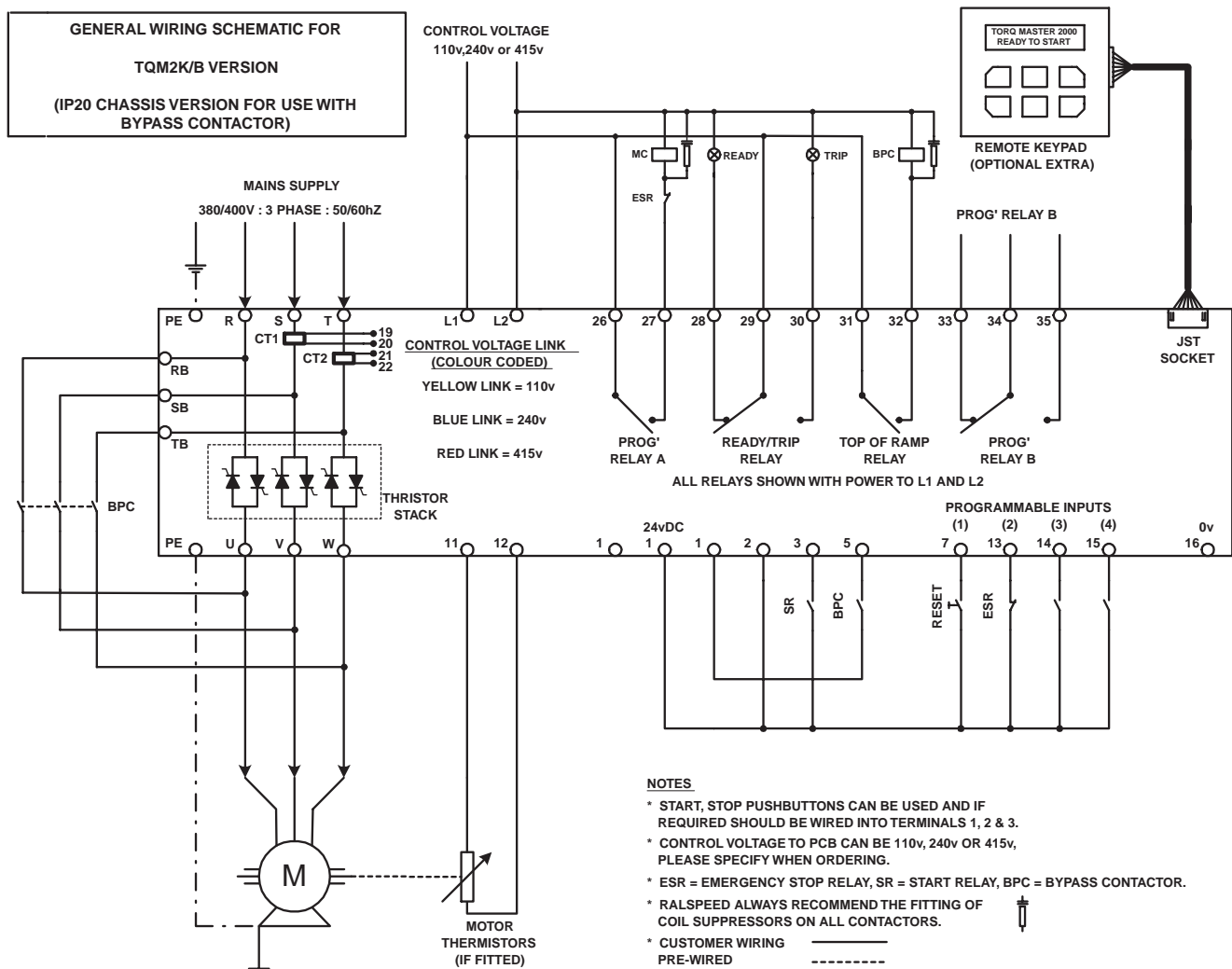
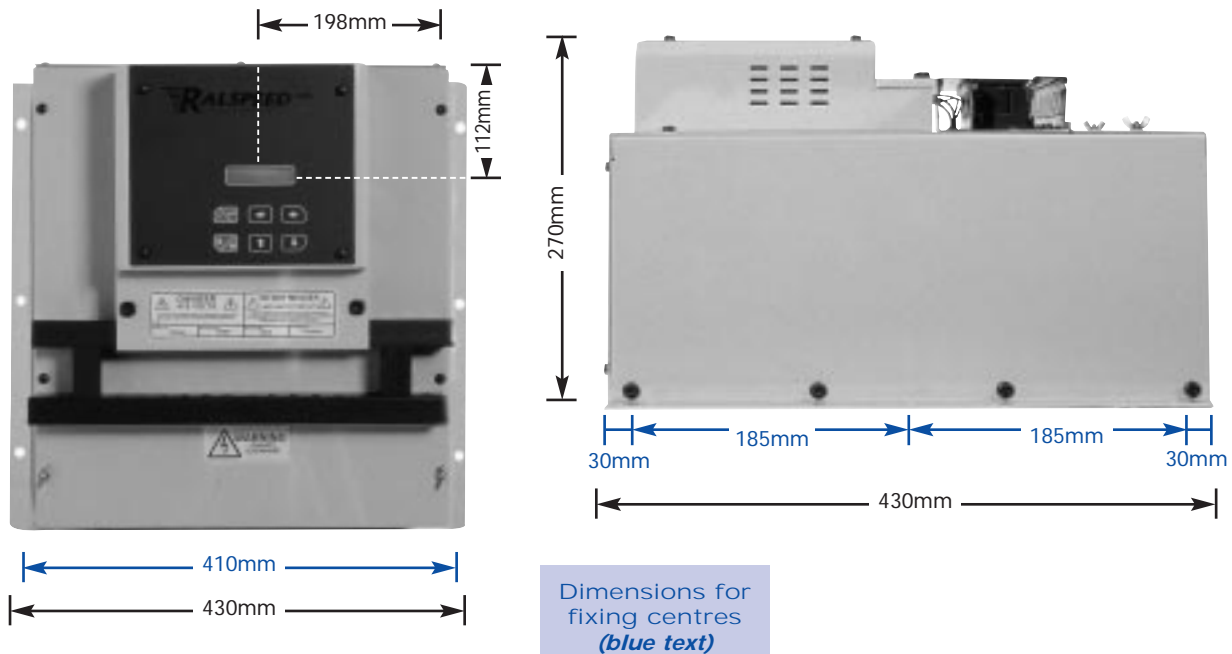
Technical Data

Ratings

KW rating	110	132	160	186	225	250
Mains power (R, S, T)	110vAC to 415vAC +10%-10% (690v available as standard option)					
Current rating (Amps) at 380v	205	245	300	342	408	460
Control supply L1 & L2 (on PCB)	110v / 220v / 440v User selectable and fully fused					
Accel / Decel time – (Voltage ramp)	1 to 240 seconds independently adjustable					
Current limitation details	Max current limit 600% of full load current Ramp to limit 1-10 sec, Current time out 10-60 sec					
Starting torque	25% to 70% of mains voltage – 5% steps					
Stopping torque	25% to 100% of mains voltage – 5% steps					
Torque boost (kick start)	70% of mains voltage adjustable from 200ms to 2sec					
Max switching cycle	12 even starts per hour with override in engineers menu					
Dimensions H x W x D (in mm)	430 x 430 x 270					
Weights Kg (approximately & unpacked)	25	25	25	25	30	30
Recommended AC1 rating of bypass	250	315	450	450	450	600
Power Terminals - (hole size in sq mm)	10	10	10	10	10	10
Ambient / Storage temperature	0°C 45°C / -22°C 75°C					
Programmable Relays	Overload, Underload, Thermistor, Service Over, Phase Fault, Firing Fault, External Trip, Overload Pre-alarm, Shearpin, Too many starts, Brake time over & Top of ramp					
Programmable Inputs	Inch, Reset Run Hours, External Trip, Brake Stop, Ramp Hold, Start Delay, Soft Stop, Local/Remote, Em Stop, Reset & Heatsink over Temperature					
Protection	Electronic Overload with 5 Selectable Curves, Underload, Thermistor Trip Circuit, Phase Fault, Thyristor Fault, Overload Pre-Alarm Too many starts, Emergency stop input & electronic "Shearpin"					
Information Screens	Motor Running - Time & Date, Ambient Temperature, Motor Amps (both digital & bar graph), 1000 Event Data-log (Downloadable), Service Interval & Run Hours					

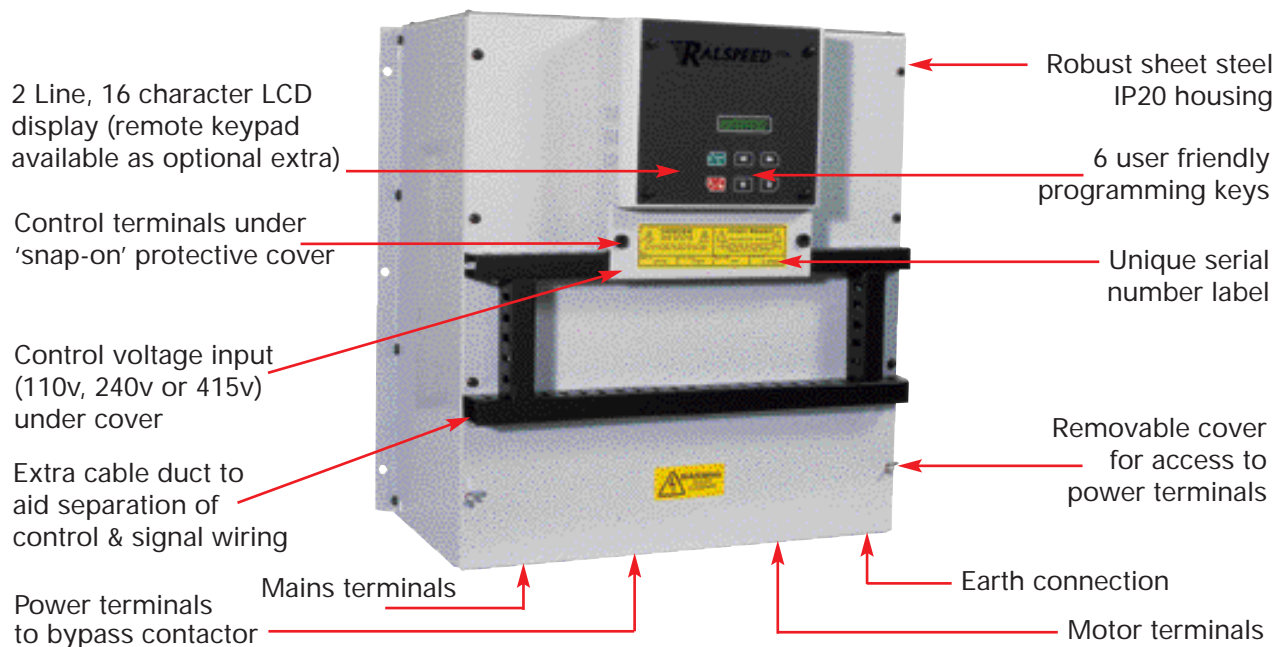
Note: Due to continuous improvement & development, sizes & specification may change without notice - always check with factory before ordering.

TQM2K-110/B to TQM2K-250/B



TQM2K-280/B to TQM2K-500/B

IP20 chassis version soft start unit for bypass duty, contactor to be supplied and fitted by the user



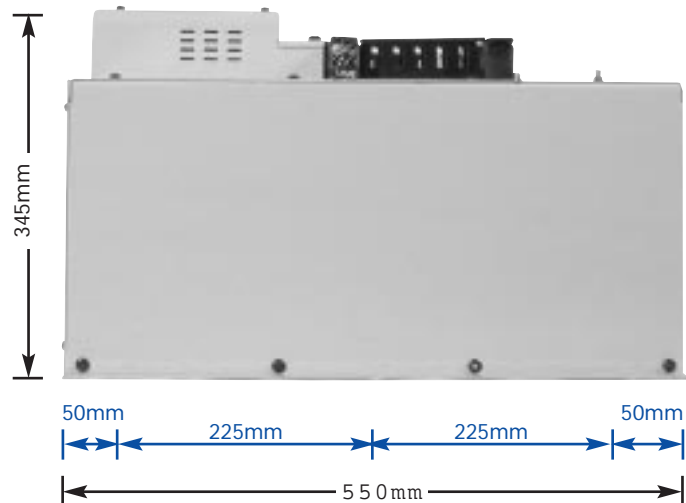
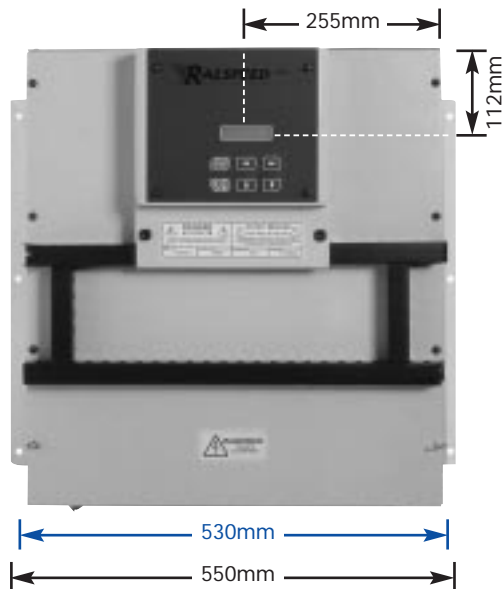
Technical Data

Ratings

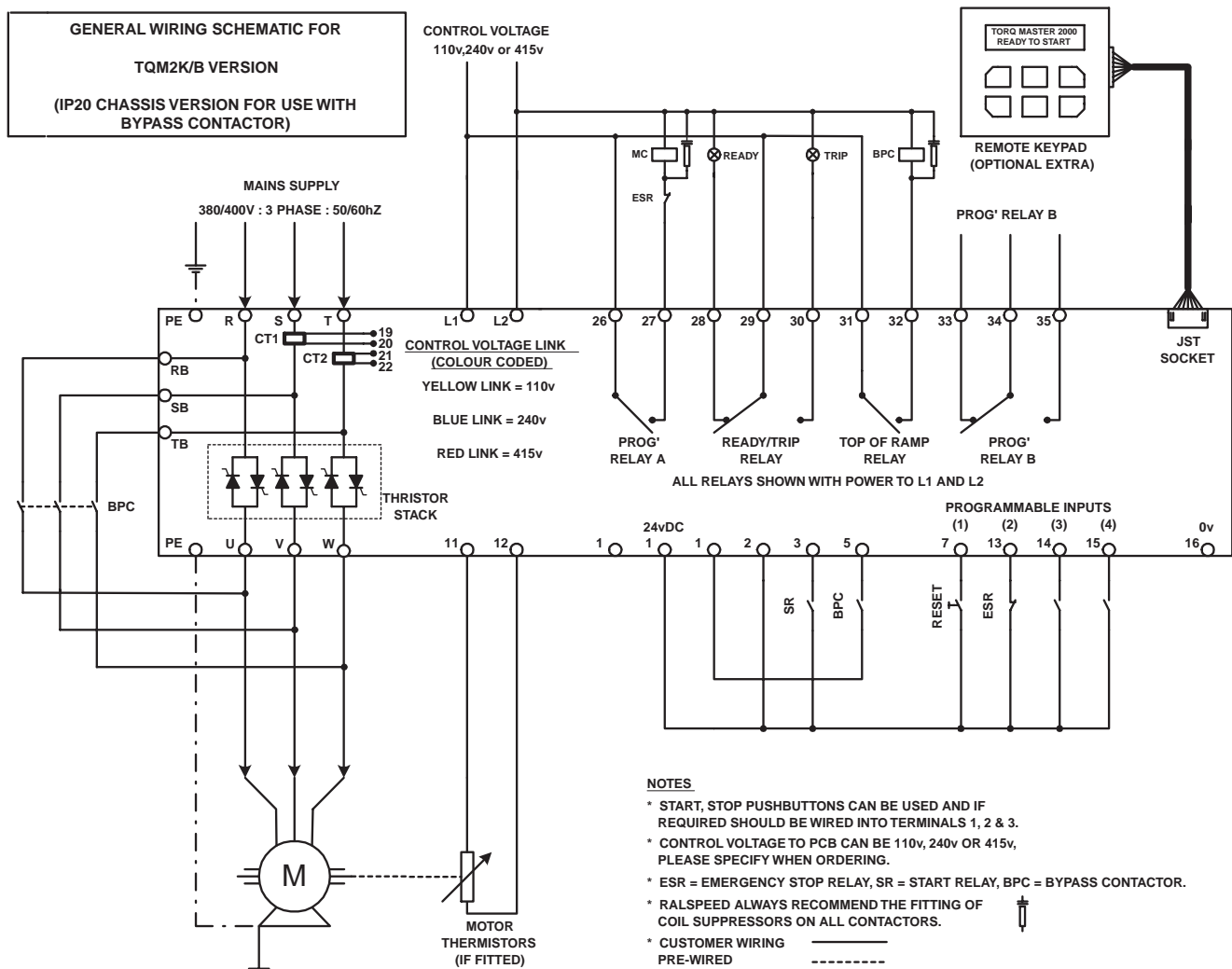
KW rating	280	336	400	450	500
Mains power (R, S, T)	110vAC to 415vAC +10%-10% (690v available as standard option)				
Current rating (Amps) at 380v	510	620	710	800	900
Control supply L1 & L2 (on PCB)	110v / 220v / 440v User selectable and fully fused				
Accel / Decel time – (Voltage ramp)	1 to 240 seconds independently adjustable				
Current limitation details	Max current limit 600% of full load current Ramp to limit 1-10 sec, Current time out 10-60 sec				
Starting torque	25% to 70% of mains voltage – 5% steps				
Stopping torque	25% to 100% of mains voltage – 5% steps				
Torque boost (kick start)	70% of mains voltage adjustable from 200ms to 2sec				
Max switching cycle	12 even starts per hour with override in engineers menu				
Dimensions H x W x D (in mm)	550 x 550 x 345				
Weights Kg (approximately & unpacked)	35	40	40	40	40
Recommended AC1 rating of bypass	600	700	1000	1000	1250
Power Terminals - (hole size in sq mm)	10	10	10	10	10
Ambient / Storage temperature	0°C 45°C / -22°C 75°C				
Programmable Relays	Overload, Underload, Thermistor, Service Over, Phase Fault, Firing Fault, External Trip, Overload Pre-alarm, Shearpin, Too many starts, Brake time over & Top of ramp				
Programmable Inputs	Inch, Reset Run Hours, External Trip, Brake Stop, Ramp Hold, Start Delay, Soft Stop, Local/Remote, Em Stop, Reset & Heatsink over Temperature				
Protection	Electronic Overload with 5 Selectable Curves, Underload, Thermistor Trip Circuit, Phase Fault, Thyristor Fault, Overload Pre-Alarm Too many starts, Emergency stop input & electronic "Shearpin"				
Information Screens	Motor Running - Time & Date, Ambient Temperature, Motor Amps (both digital & bar graph), 1000 Event Data-log (Downloadable), Service Interval & Run Hours				

Note: Due to continuous improvement & development, sizes & specification may change without notice - always check with factory before ordering.

TQM2K-280/B to TQM2K-500/B



Dimensions for
fixing centres
(blue text)



Tel: 00 44 (0)1254 582 345 Fax: 00 44 (0)1254 668 414
www.ralspeed.com